

Features

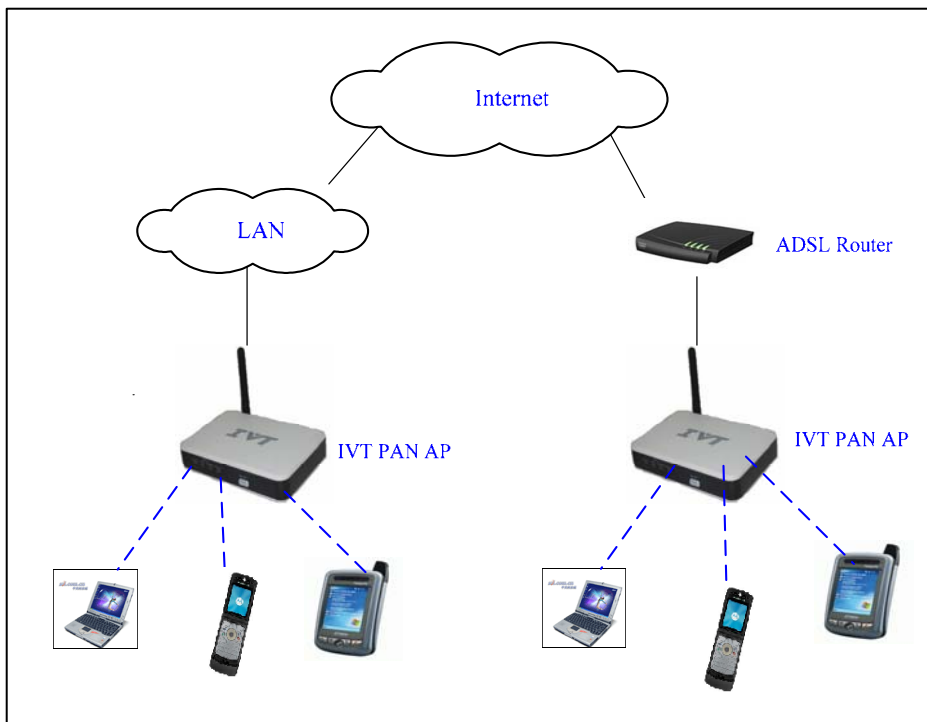
- Bluetooth Specification V2.0
- Support up to 7 Bluetooth PAN clients
- Support up to 100 meter radius coverage
- Support Bluetooth PAN profile, as a NAP
- Protocol supported TCP/IP, DHCP client/server, HTTP,FTP,PPPOE,NAT
- Provide both routing and bridging operation modes
- Support web based management

Description

The PAN Access Point (AP) supports Bluetooth PAN Profile. It has a 10/100 Fast Ethernet RJ45 LAN port to access IP Net. The PAN enabled Bluetooth device such as mobile phone, PDA, LAPTOP or PC can use it to access internet. It can be used at home or public places to provide internet access for users.



IVT PAN AP



Rev. 2.0 06/08



Specifications

LAN Interface (Two RJ-45 ports for Ethernet connection)	
10/ 100 Base-T	IEEE 802.3u
Wireless Interface	
Bluetooth standard	Bluetooth V2.0
Bluetooth Profiles	PAN/BNEP/GAP/SDP
Security	128 bit encryption and PIN-code authentication
Radio Power	Class1, 100 mW
Range	100m
LED Indicators	Power, Link/Act(LAN) Speed(100Mbps) , Bluetooth bondale status
Network functions	
TCP/ICP	Yes
DHCP Client /Server	Yes
PPPOE	Yes
HTTP	Yes
FTP	Yes
Routing mode	Yes
Bridging mode	Default
Management	
Web-based management	Yes
Software Updates	
Network Update	Yes
IVT Firmtool	Yes
Power Supply	5V VDC/1A
Environmental Conditions	
Operating temperature	0°C to 40°C
Storage temperature	0°C to 40°C
Relative humidity	20 to 80%
Dimensions	
130 mm x 90 mm x 26 mm (LxWxH)	

Note: Specifications are subject to change without notice



Bluetooth PAN AP

IVT Corporation, F5, FaZhan Building, No.12, ShangDi XinXi Road, HaiDian District, Beijing, China, 100085
Tel: 86-10-82898225 Fax: 86-10-62963059